

Milton Road, Wimbledon SW19 8SF



Guide Price £950,000 Freehold

A spacious and well-presented four bedroom end of-terrace family home, extended to 1265 sq. ft. with a loft conversion and side extension. Set over three floors, this bright and stylish home offers generous living space throughout. The property features four well-proportioned bedrooms and two modern bath/shower rooms, over the first and second floors. The ground floor boasts a large double reception room, flowing through to a fully integrated kitchen/dining area. French doors open directly onto a private rear garden, creating a seamless indoor-outdoor connection. Beautiful wooden flooring runs throughout, and each room is bathed in natural light, enhancing the home's warm and inviting feel. Perfectly positioned at the upper end of Milton Road, the property is close to the popular Garfield Primary School and Garfield Recreation Ground. Milton Road is a quiet turning off Haydons Road, and ideally located for Haydons Road station with direct links into the City. Local shops are nearby, and South Wimbledon (Northern Line) is easily accessible. Wimbledon Town Centre, with its excellent shopping, transport, and leisure facilities, is also close by. Council Tax band E (Merton).

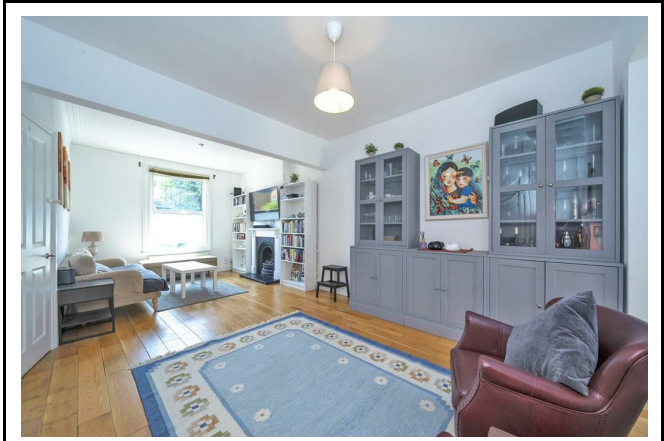
- End of terrace Victorian family house
- Four bedrooms
- 1265 sq.ft of accommodation
- Extended to loft and side
- Double reception room
- Two bath/shower rooms
- Kitchen/dining room
- Low maintenance front and rear gardens
- Excellent condition throughout
- Great location

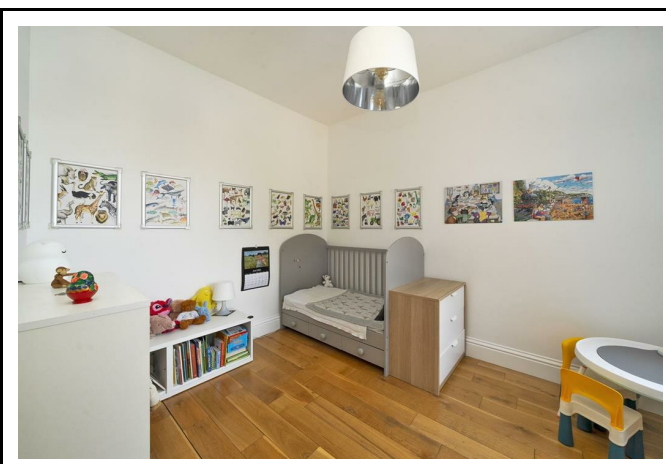
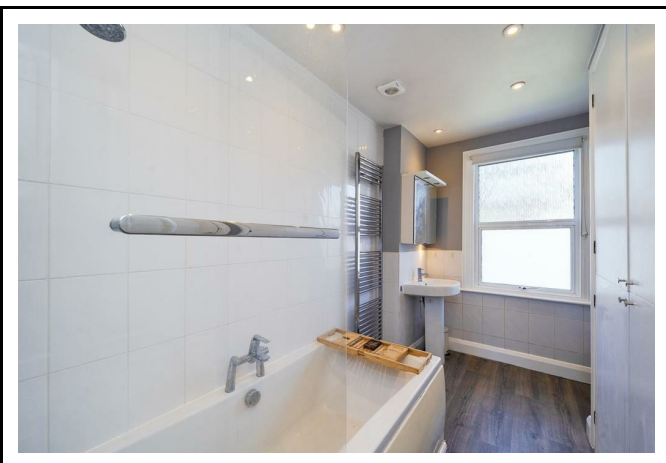
020 8971 6780

24 High Street, Wimbledon Village, SW19 5DX

Location:

Milton Road is a turning off Haydons Road and is conveniently placed for Haydon's Road station with its links into The City of London. There are local shops nearby and South Wimbledon (Northern line) underground station is also easily accessible. Wimbledon Town centre with its many shopping, transport and entertain amenities is also close by.







EPC Rating D
Council Tax: E



Viewing Strictly By Appointment Through Sole Selling Agents Andrew Scott Robertson

Note: andrew scott robertson for itself and for the vendors or lessors of this property whose agents they are give notice that:

- (i) the particulars are set out as a general outline only for the guidance of intending purchasers or lessees, and do not constitute, nor constitute part of, an offer or contract
- (ii) all descriptions, dimensions, references to condition and necessary permissions for use and occupation, and other details are given in good faith and are believed to be correct but any intending purchasers or tenants should not rely on them as statements or representations of fact but must satisfy themselves by inspection or otherwise as to the correctness of each of them;
- (iii) no person in the employment of andrew scott robertson has any authority to make or give any representation or warranty whatsoever in relation to this property.

We are here to help you find your next home. Prior to viewing we recommend that you discuss any particular points which are likely to affect your interest in the property with a member of staff who has seen the property in order that you do not make a wasted journey. If you would like to view the property or require further information please call: 020 8971 6780